



Item No. 2350022-1 en Rev 03/12

## SAFETY PRECAUTIONS

To ensure safe operation, read the following statements and understand their meaning. This manual contains safety precautions which are explained below. Please read carefully.



### WARNING

Warning is used to indicate the presence of a hazard that *can* cause severe personal injury, death, or substantial property damage if the warning is ignored.



### CAUTION

Caution is used to indicate the presence of a hazard that *will* or *can* cause *minor* personal injury or property damage if the caution is ignored.

### NOTE

Note is used to notify people of installation, operation, or maintenance information that is important but not hazard-related.

### For Your Safety!

These precautions should be followed at all times. Failure to follow these precautions could result in injury to yourself and others or damage the equipment.

To reduce risk of injury or damage to the equipment:

- Check equipment before each use to insure the equipment is clean.
- Check for broken, nicked or dull blades and if found, replace the blade assembly.
- Check to insure that the pusher head sits down completely on the rubber bumpers.
- Check to ensure the rubber bumpers are in place. DO NOT USE EQUIPMENT IF BUMPERS ARE NOT IN PLACE.
- On tabletop models the suction cups will hold the equipment securely to smooth surfaces.
- Wall mounted equipment must be securely mounted to wall studs. Use proper size and type hardware to mount equipment to wall.
- If necessary, lubricate guide rods using a light coating of mineral oil, Petro Gel, or food grade lubricant. DO NOT USE COOKING OIL AS IT WILL BECOME STICKY AND MAY PERMANENTLY DAMAGE THE PUSHER HEAD BEARINGS.

## FUNCTION AND PURPOSE

Intended for cutting, dicing and wedging vegetables and fruits.

## FEATURES AND CONTROLS



Figure 1. Features and Controls, Table Top Model.

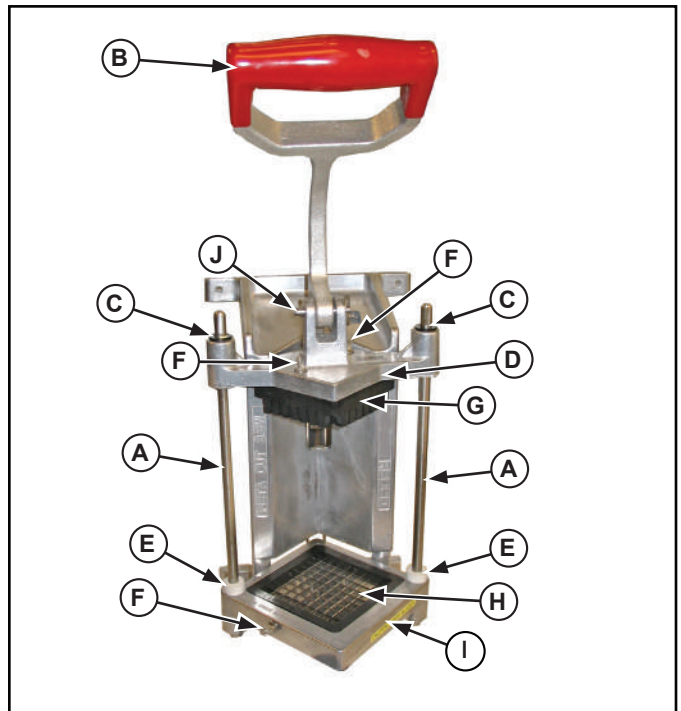


Figure 2. Features and Controls, Wall Mount Model.

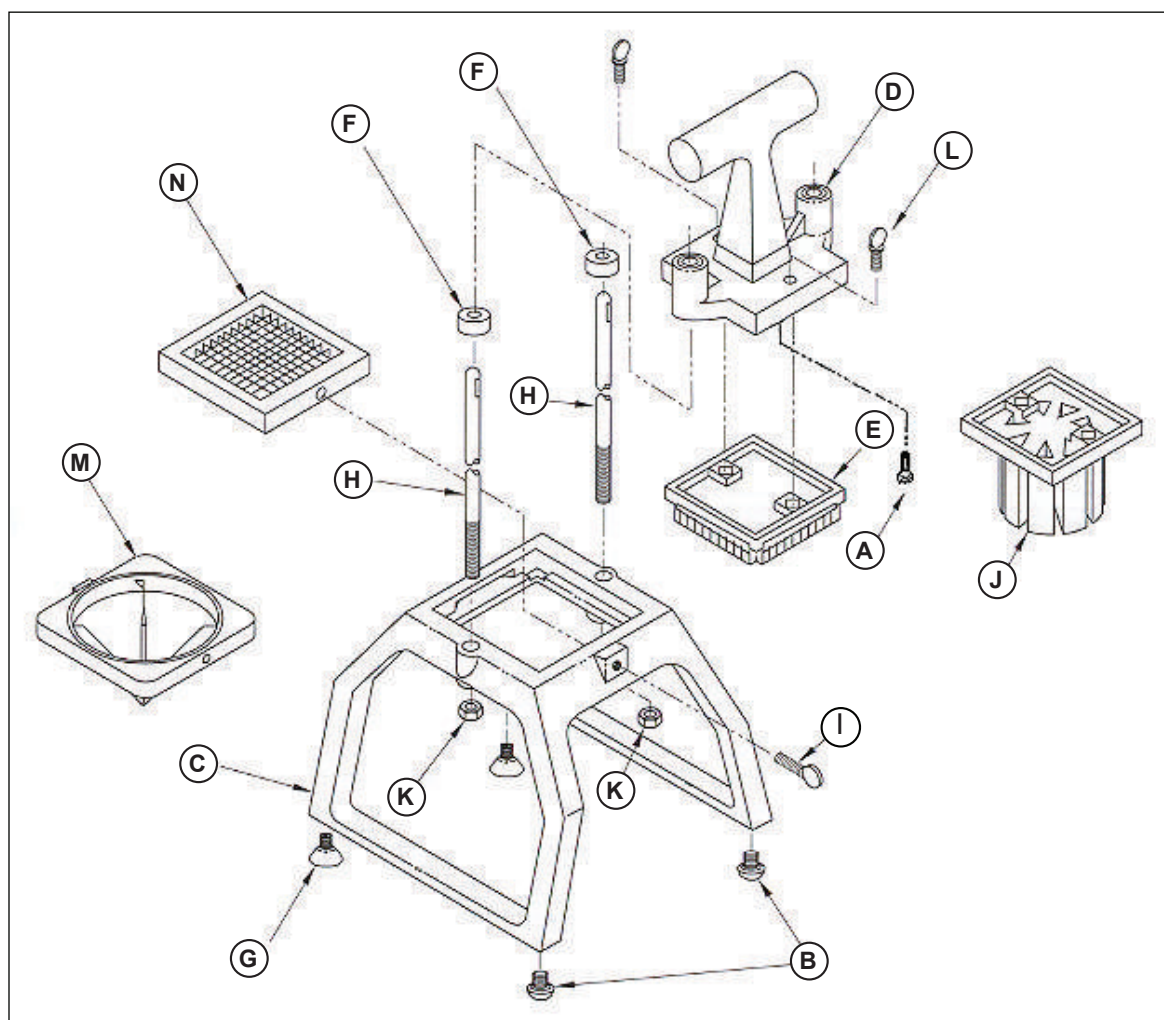
- (A) GUIDE RODS. Guides and align the pusher head onto the blade set.
- (B) HANDLE. Used to lower and raise the pusher head block.
- (C) GUIDES. Used for smooth and consistent operation of pusher head on the guide rods.
- (D) PUSHER HEAD ASSEMBLY. Made up of the pusher head block (and "T" handle for tabletop models).



## SPARE PARTS LIST AND EXPLODED VIEW - INSTACUT 3.5

LETTER	PART NUMBER	DESCRIPTION
A	071	Screw, Hex Head Stainless
B	2319	Black Rubber Foot, Screw On (sold individually)
C	379001	Base (includes Guide Rods)
D	379005	Pusher Head Casting (includes Bearings)
E	379007	Pusher Head Block, 3/8" Cut
	379008	Pusher Head Block, 1/4" & 1/2" Cut
F	379009	Bumper
G	379015	Suction Foot
H	379031	Guide Rod, 3/8" Diameter
I	379034	Thumbscrew, 1/4-20 x .875" (before 8/2008)
	2014004	Thumbscrew, 1/4-20 x 1.0" (after 8/2008)
J	379038	Pusher Head for 4-8 Section Wedger
	379039	Pusher Head for 6-12 Section Wedger
	379040	Pusher Head for 5-10 Section Wedger
	379041	Pusher Head for 4-8 Section Corer
	379061	Pusher Head for 6-12 Section Corer

LETTER	PART NUMBER	DESCRIPTION
K	353	Lock Nut 5/16" x 18 UNC
L	379034	Thumbscrew, 1/4-20 x .875" (before 8/2008)
	2014012	Thumbscrew, 1/4-20 x .750" (after 8/2008)
M	15065	Blade, 4 Section Wedge
	15067	Blade, 6 Section Wedge
	15068	Blade, 8 Section Wedge
	15069	Blade, 10 Section Wedge
	15070	Blade, 12 Section Wedge
	15071	Blade, 6 Section Corer
	15072	Blade, 8 Section Corer
N	15062	1/4" Dice
	15063	3/8" Dice
	15064	1/2" Dice
	15086	1/4" & 1/2" Dice



## SPARE PARTS LIST - AND EXPLODED VIEW - INSTACut 3.5

LETTER	PART NUMBER	DESCRIPTION
A	353	Lock Nut
B	4411	Pull Pin w/ Ring 1 1/4" Long
C	379007	Pusher Head Block, 3/8"
	379008	Pusher Head Block, 1/4" & 1/2"
D	379009	Rubber Bumper, 3/8" I.D.
E	379033	Blade Holder
F	379025	Screw, Shoulder
G	379027	Handle Link
H	379030	Base
I	379031	Guide Rod
J	379032	Pusher Head Casting w/ Bearings
K	379034	Thumbscrew 1/4-20 x .875" (before 8/2008)
	2014012	Thumbscrew 1/4-20 x .750" (after 8/2008)
L	379038	Pusher Head 4-8 Section Wedger
	379039	Pusher Head 6-12 Section Wedger
	379040	Pusher Head 5-10 Section Wedger
	379041	Pusher Head 4-8 Section Corer
	379061	Pusher Head 6 Section Corer

LETTER	PART NUMBER	DESCRIPTION
M	379046	Nutblock, Hex
N	379052	D-Handle, Rubber Coated
O	15065	Blade, 4 Section Wedge
	15067	Blade, 6 Section Wedge
	15068	Blade, 8 Section Wedge
	15069	Blade, 10 Section Wedge
	15070	Blade, 12 Section Wedge
	15071	Blade, 6 Section Core
	15072	Blade, 8 Section Core
P	15081	1/4" Dice
	15082	3/8" Dice
	15083	1/2" Dice
	15084	1/4" x 1/2" Dice
Not Shown	379006	Screw, 1/4-20 x 1" Long
Not Shown	379016	Screw 6-32
Not Shown	379045	Shoulder Slot Screw

